



BROCHURE

KenCampusTM ERP

Swash Convergence Technologies Limited



KenCampus™ ERP Campus Management Software

Social, technological, and economic drivers are transforming education and training around the world. In educational sector, IT infrastructure is getting more rigorous as new technologies are being introduced rapidly. To address this need, an institution must have an Education Management System which should take care of the requirements of students, educators and administrators.

Overview

KenCampus™ ERP services are cloud based and allow a stronger and integrated network creation of student data. It helps institutions with a suite of offerings that caters to seasonal academic events and access to examination information, course materials and ongoing classes to have a backup of all the information whenever required. Making use of cloud services can improve and extend the level of education they offer.

HIGHLIGHTS - KenCampus™

- KenCampus™ ERP is complete campus management software for school, colleges and universities.
- It gives campus wide integrated framework that automates and organizes institutions various resources, operations and administration.
- Its exceptionally durable and collaborative platform helps making an institution unconstrained by time and place with expanded collectiveness, flexibility, convertibility, pervasiveness, and worldwide integration.
- The framework allows all users to safely access what they require, when they require and give easy access to the information.



Business Benefits

- Amalgamation of various institutional processes
- Eliminates human error from institute's records ultimately resulting more efficient data management.
- Better control and view over key information of the Institute.
- Improves cost efficiency – better profitability and lower cost
- Provides expandability and mobility to the campus.
- Zero cost of Ownership
- Ease of Use (User friendly workflows and interfaces)
- Improved time and money management
- Supports Growth and scalability as well as diversity in institutes.
- Helps in staying ahead of competition.
- 360-degree view of your campus, anytime, from anywhere
- Secured - Hosted on highly secured Microsoft Azure servers
- Automatic updates and upgrades

Why KenCampus™ ERP??

Primary reasons setting it apart

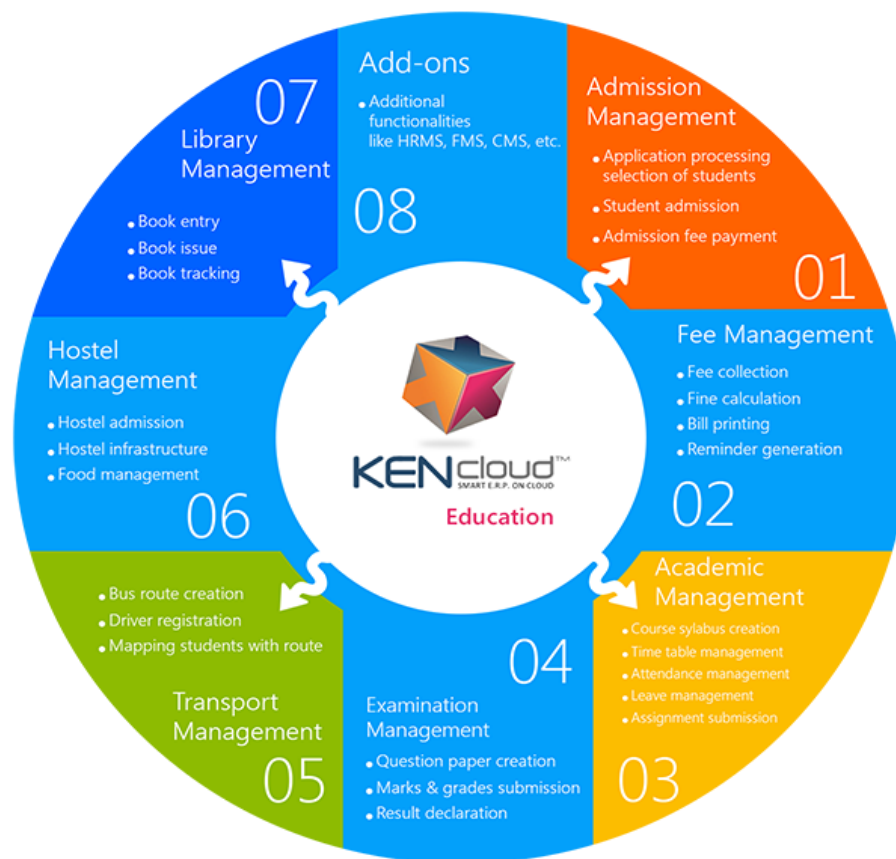
- Promoter is an IT Architect – understands the products in the industry & have made KEN CLOUD one notch better through their in-depth domain expertise.
- KenCloud's IT architecture and nuances which is exhaustive at the back-end & user friendly & secure in the front-end, is a key USP.
- Not too complicated for deployment as well as use.
- Simple console and report availability in only “3 clicks” make the software very easy to use.
- Extremely cost competitive in the industry, 'pay per user' models. Zero cost of acquisition for the buyer.
- Telephony integration - SMS and Conference Gateway Embedded.
- 100% mobility solution for tracking and managing through all versions of Android, iOS, RIM, Windows based phone, tablets and express pads.



Features at a Glance

- Single database management system
- User friendly institute management software
- Complete automation of staff management
- Budget preparation and financial planning
- Full-fledged library management system
- Creates several reports such as: grade cards, financial reports, attendance report etc.

KenCampus™ ERP Modules





- 1. Admission Management:** Automate and manage whole admission process starting from scheduling online/offline entrance examination to appropriate student selection.

Key features

- Receive applications for admission online.
- Generate automated sequential application form and admission numbers based on your preference.
- Evaluate candidate's eligibility for admission.
- Option to schedule entrance examinations for the students.
- Automate and manage overall admission process and admit the students.

- 2. Fee Management:** Verification of fee receipts, generation of fee receipts and managing admission audit log report can be done easily.

Key features

- Separate fee structure can be created for students based on category, concession etc.
- Internal and external examination can be managed.
- Maximum and minimum marks can be set for each subject.
- Auto generation of rank list based on each exam.
- Auto generation of class wise progress report with grades.
- Auto generation of individual progress reports of students.

- 3. Academic Management:** It includes Course syllabus creation, time table management, attendance management, leave management and assignment submission.

Key features

- Syllabus Management
- Online Assignment Management
- Online exam Management
- Student Feedback and Complaints



- Online Lecture and Upload Lecture Notes
- Online Course Management

4. **Examination Management:** It manages creation of question paper, marks & grades submission and finally declares the result.

Key features

- Exam management with mark entry.
- Internal and external examination can be managed.
- Maximum and minimum marks can be set for each subject.
- Auto generation of rank list based on each exam.
- Auto generation of class wise progress report with grades.
- Auto generation of individual progress reports of students.

5. **Transport management:** It helps the institution in tracking the bus routes, stoppage, and tracking the current location of bus.

Key features

- Vehicle Details
- Fuel Details
- Employee Details – License Expiry Date
- User Details – Staff, Student
- Stages and Route Allocation and more.

6. **Hostel management:** It helps in managing Student Details, Inventory, Daily Expense, Student Mess Bill, Student Attendance etc.

Key features

- Student Details
- Inventory
- Daily Expense
- Student Mess Bill
- Student Attendance etc.



7. Library Management: It manages books with their codes, keep a record of book issued to avoid missing books from library and if any book went missing, the librarian can track it with the help of KenCampus™ ERP.

Key features

- Maintain library rules and return of materials
- Maintain complete list of books
- Option to enroll the student and teacher
- Facility to renew and reserve the book
- Option to view list of books along with their quantity details
- Facility to set maximum loan period and fine period for the library

Add-On Modules

8. Human Resource Management: It manages the entire administrative, academic and other staff by tracking their performance, appraisals, promotions and transfers which helps in increasing the potential growth of employees.

Key features

- Staffing Management
- Employee (Personal) Information
- Leave Management
- Holidays Calendar
- Payroll Management
- Normal and advanced search facility
- Manage all employees from admission to exit
- Employee Appraisal System

9. Finance Management: It covers every aspect of finance and accounting to ensure all the data is accurate and so as to avoid discrepancy in accounts sheet.

Key features

- Cash Management & Banking
- Manage and Pay instant fees
- Manage entire expense and incomes



- Customize and manage different category of expense and incomes
- Fee Structuring and Policies
- Academic Fee Collection
- Hostel Fee Collection
- Transport Fee Collection
- Fee Collection Reports
- Cost Centre Management
- Budgeting (Cost Centre based)
- Creditors Management System

KenCampus™ - Key differentiators

- The Best User Friendly Interface
- One Software for Multiple types of Institutions
- The Most Flexible Platform
- Reports accessible from any device by email
- Secure Data from Unauthorized Access
- Highly Versatile Deployment Options.

Innovation at Swash

Our Developers are innovators, rather than being followers. Since inception, Swash has continuously working on its technical platforms to map itself with the current IT trend. It enables Swash to use latest platforms to differentiate itself from others. Our aim behind using all the latest technical platforms is to give our clients a scalable solution. Business in current market is no longer limited with traditional boundaries. With rapid change in technology, we ensure that we can deliver best possible technical services to our valuable clients.

Technology Stack

We are recognized by Microsoft as Windows Azure Featured Partner world-wide, Microsoft Cloud Accelerated Partner & Microsoft Small Business Specialist. We specialize in developing strategies and software solutions, which are built around latest Microsoft technologies, to enable IT cost savings and increased profits for our clients. Our KENcloud ERP is built on Windows Azure platform, the most advanced and revolutionary Internet-scale computing and services platform hosted in data centers managed or supported by Microsoft.



Deployment

KenCloud ERP Suite is available both as on premise as well Software-as-a-Service (SaaS) models. It is the most preferred choice for businesses across the globe as it encompasses in-built intelligence and business acumen for your industry.



Multi Device Accessibility

The entire suite of products is accessible over the Internet, which gives you the freedom to access information from any part of the globe at the click of a browser button, whether from a laptop, a PDA, mobile phone or a tablet PC. So, you and your colleagues can monitor, manage and execute tasks even when you are on the move.

Swash Advantage

- Large and complex project engineering and handling capabilities
- End-to-end solutions for global clientele
- Extensive domain expertise
- Sizable resource pool with diverse skill sets
- Strong customer and vendor relationships
- Strong service delivery chain

Know Us

Swash Convergence Technologies Limited is one of the leading Software Development Company, with global existence; began its successful foray into the IT world in 2001, flourishingly spreading its fragrance both in the National as well as the International market especially in the business of providing IT solutions & Services to its clients. Swash Convergence Technologies has been recognized as one of the Microsoft Windows Azure featured partners worldwide. Our team lay on the three milestones i.e.: Simplicity, Excellence and Excitement, which helps us to create value in our strategies. It carved out a niche for itself among IT companies, as a provider of single window software solutions and



services. In SCTL, we honor the collective strength of all our employees & believe that diversity is the key to our competitive advantage.

For organizations that want to bag new opportunities and establish a competitive position, Swash Cloud ERP Solutions give end-to-end results that scale up or down as required. We accommodate with consulting network, mobility services so that you can concentrate on what matters – innovating, developing and providing customers an extraordinary experience.

To learn more about SCTL, please visit our website at - www.swashconvergence.com

Call us @ 1800-121-4357

Email: info@swashconvergence.com